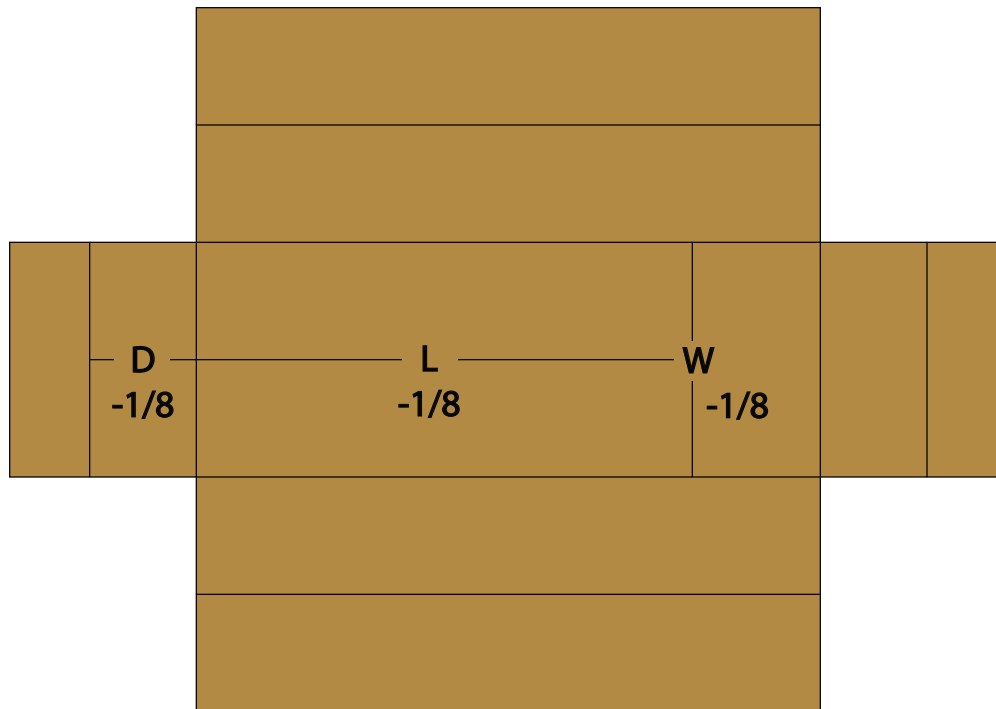


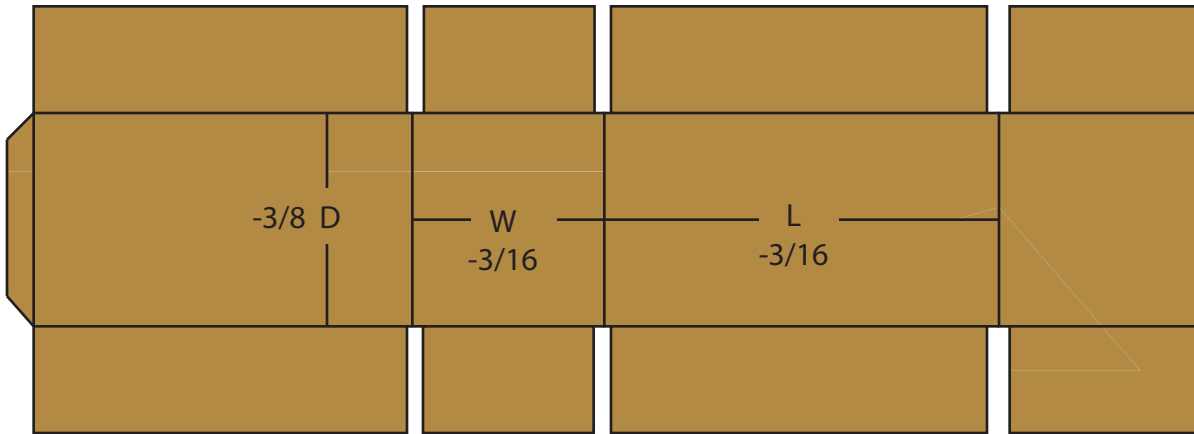
# How To Measure A Box

All boxes are called out by inside dimensions. To manufacture a box certain allowances must be added to take care of scoring and overlapping. To reverse the process and spec an existing box these allowances must be subtracted from the measurements. The following drawings will show how to do the most popular styles. In all cases make a mark in the center of the score and measure from score line to score line on the panel indicated **only** to the nearest 1/16 of an inch and subtract the allowance shown, this is the net inside dimension. Always call length first, then width then depth.

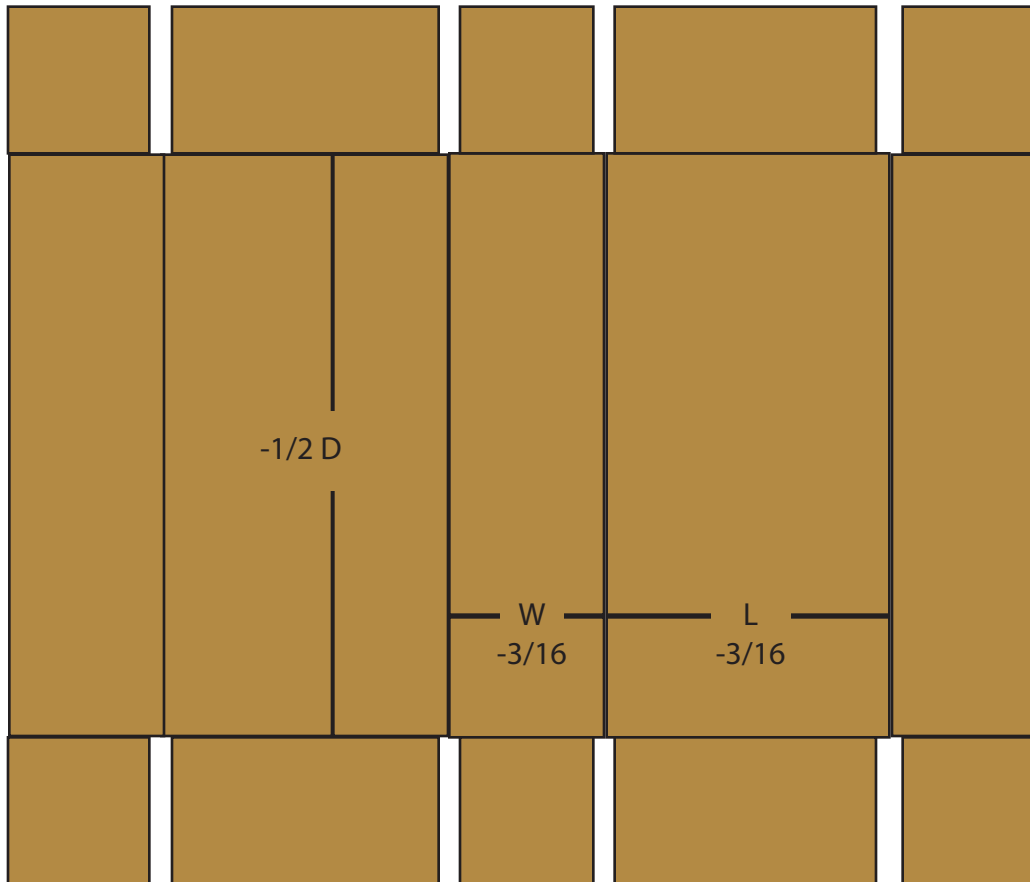
## One Piece Folder



# RSC



# FIVE PANEL FOLDER - FOL FLAPS



# FIVE PANEL FOLDER - FOL FLAPS

